

INTRODUCTIONS

Daric S. Smith
Director, CPA and Residential Facility Division,
Department for Children and Families

Christle Appelhanz
Executive Director, Children's Alliance

Chad E. Anderson
President, KVC Kansas

Amanda Peters
Project and Compliance Coordinator, Saint Francis Community
Services

Joyce DeBolt
Family Services Supervisor, The Shelter, Inc.

TODAY'S GOALS

- Overview of the CPA Forum and adoption of a universal policy for monthly visits.
- Report on the progress of the CPA Forum to date.
- Introduction of the tools we used to engage participants in the process and take ownership.
- Small group practice session.
- Report and ranking of solutions.

WHY WE SAW A NEED

During routine complaint investigations, surveyors were identifying violations related to environmental issues.

We identified a need to standardize processes.

We wanted to teach everyday implementation of the state family foster home regulations, to make it an operating norm.

Our basis of policy development was to normalize health and safety during the routine home visit.

DEVELOPMENT OF THE POLICIES AND PROCEDURES

Child Welfare Contractors (KVC & SFCS) met with Licensing Authority - need was expressed.

Contractors created agency specific policy and procedures.

Contractors met to ensure policies and procedures were parallel. The product was shared with Licensing Authority.

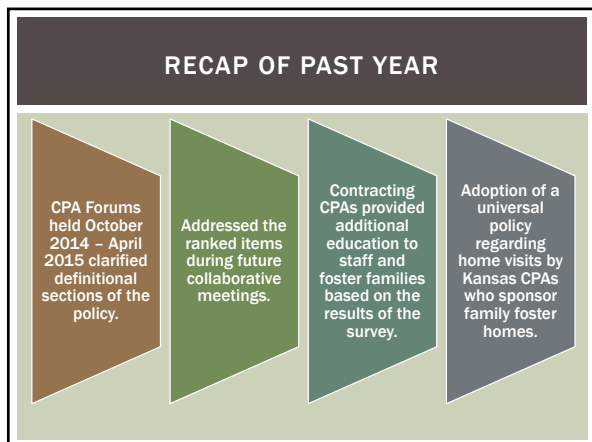
FORUM

All child placing agencies (CPAs) and KFAPA representatives were invited to attend an open forum in which Licensing Authority, KVC and SFCS presented the pilot project and survey results.

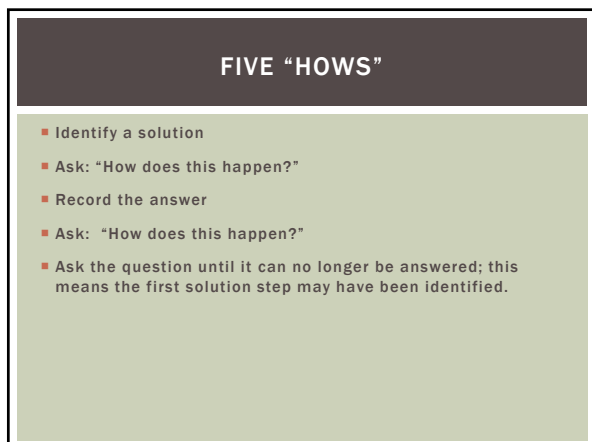
Concerns and questions were categorized, ranked, and assigned for future discussions.

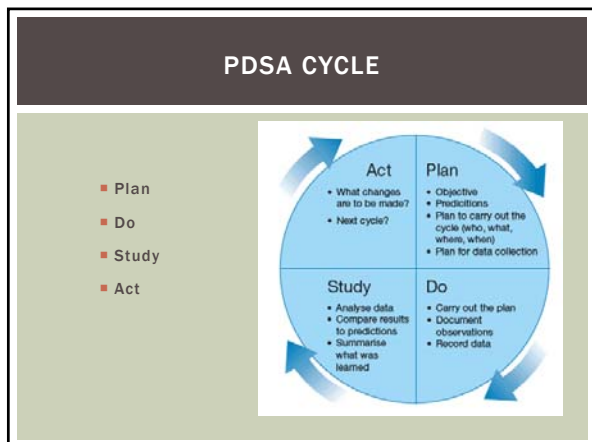
Reviewed the purpose of the forum, policies and survey results. Break-out groups reviewed concerns and questions regarding implementation.

CPA representatives were asked to make a commitment to come to future meetings and adapt policies for practice in their own CPAs.









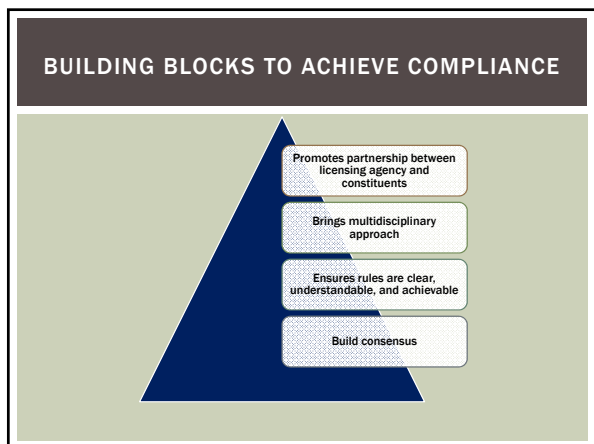


REGULATION COMPLIANCE TO ADDRESS

- The rule is that there is no smoking within 500 feet of a licensed care facility.







RECOMMENDED BEST PRACTICES FOR HUMAN CARE REGULATORY AGENCIES

- Establishes planned methods to maintain visibility, communications and responsiveness to key stakeholders using methods which provide for broad involvement and visibility in a variety of settings.

Q&A

SPECIAL THANKS

Special thanks to KFAPA for their participation

THANK YOU

"High achievement always takes place in the framework of high expectation."

— Charles Kettering
